

RAYOVAC



Rayovac Ultrapro Batteries

- ▶ High performance & long lasting
- ▶ Rayovac's UltraPro alkaline batteries are mercury free and guaranteed fresh for 10 years
- ▶ Industrial alkaline

167075 "AA" Alkaline battery (24pk)

167076 "AAA" Alkaline battery (24pk)

167078 "C" Alkaline battery (12pk)

167077 "D" Alkaline battery (12pk)

167079 "9V" Alkaline battery (12pk)

RAYOVAC



167035 Rayovac Floating Lantern Flashlight

LED

- ▶ Lantern floats in water
- ▶ Includes (1) 6 Volt battery
- ▶ Lasts up to 45 hours
- ▶ Beam distance: 100 meters
- ▶ 85 Lumens



Heavy Duty Extension Cord

- ▶ 3 wire grounded
- ▶ Meets OSHA specifications
- ▶ Ultra flexible
- ▶ 13 amp
- ▶ 125 volt
- ▶ 14/3 wire

156010 50'

156011 100'



First Aid Kit

- ▶ Weatherproof plastic case
- ▶ Includes items for: small cuts & burns, medium cuts & scratches, severe bleeding & burns

421010 10 Person Kit

421009 50 Person Kit



990100 Chadwell Supply Bottled Water

- ▶ 16.9 oz Plastic bottles
- ▶ Natural spring water
- ▶ 24/CS



415072 Heavy Duty 12' x 20' Tarp

- ▶ UV Resistant material
- ▶ Plastic reinforced corners
- ▶ Rustproof polycarbonate grommets
- ▶ Grommet every 36"
- ▶ Water, mildew & tear resistant
- ▶ 10 mil - Heavy duty

Don't Forget!

415075 Bungee Stretch Cords - 12/pk



407056 50' Solid Braid Poly Derby Rope

- ▶ Yellow
- ▶ 3/8" X 50' Rope
- ▶ 230 lb. Load limit



352086 Household Bleach

- ▶ Liquid bleach
- ▶ Brightens, whitens, removes tough stains
- ▶ Sold by the case
- ▶ (6) 1-Gallon bottles

When weather officials warn about an approaching storm, it may be too late to prepare effectively. Water, batteries and other storm supplies can be wiped from our local inventory quickly and we may not be able to restock fast enough to help. Use these suggested items to stock up now in case your property finds itself in the path of a storm.

DEWALT

412067 DeWalt 20V Max Lithium Ion Compact Drill/Driver Kit

- ▶ 1/2" chuck with 15 clutch settings
- ▶ 2 speeds 0-600/0-2,000 RPM
- ▶ 20V MAX* Lithium Ion 1.5 Ah battery
- ▶ Cordless
- ▶ Includes (2) batteries, charger, belt hook & contractor bag



Tapcon Hex Washer Head

- ▶ Includes 5/32" drill bit
- ▶ 100/BX

407073 3/16" x 1-3/4" Screw

407074 3/16" x 2-1/4" Screw

407075 3/16" x 2-3/4" Screw



Drywall Screw

- ▶ Sharp point
- ▶ Drywall screws
- ▶ Coarse thread

407053 #6 - 1" Screw - 250/BX

407025 #6 - 1-1/4" Screw - 100/BX

407054 #6 - 1-5/8" Screw - 250/BX

407026 #6 - 2" Screw - 100/BX

407055 #8 - 3" Screw - 250/BX



102010 L-Type Condensing Unit Hurricane Bracket

- ▶ 4"L x 1-1/4"H x 1"W
- ▶ Steel L type
- ▶ Meets FL state code for new A/C installations
- ▶ 4/PK



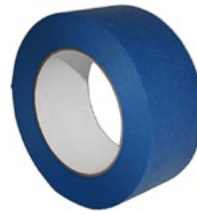
411028 Super Pry Bar

- ▶ Made from forged, heat treated, high carbon steel
- ▶ Polished, beveled cutting edge
- ▶ Arched center
- ▶ Tight radius on bend angle
- ▶ 1-3/4" W x 15-1/2" L
- ▶ Powder coated finish



411039 Chadwell Supply Retractable Utility Knife

- ▶ Heavy duty utility knife
- ▶ 3 Blades included



Blue Masking Tape

- ▶ Professional Grade
- ▶ Light adhesive
- ▶ Easy removal
- ▶ 60 yards

453014 2" width

453007 3" width



422019 Swimming Pool Closed Sign

- ▶ Pool sign
- ▶ Blue & white
- ▶ 12" X 18"



Leakstopper Rubber Flex Spray

- ▶ Rubber sealant in convenient spray
- ▶ Stops leaks, seals & protects
- ▶ Ideal for drain pans, roofs, gutters & more
- ▶ 18 oz. can

454096 Black

454097 White



Pow-R Wrap Repair Kit

- ▶ Adheres to PVC, plastic, wood, rubber, steel, copper, aluminum, fiberglass and more
- ▶ Supports up to 300 PSI
- ▶ Specially formulated fiberglass tape designed to repair water, sewer and other fluid pipe lines
- ▶ No tools are required

456090 2" x 60"

456091 3" x 108"



354014 Boardwalk Paper Towel Rolls

- ▶ Soft & absorbent
- ▶ 2 Ply, Perforated
- ▶ 11" x 8.8" sheets
- ▶ 85 sheets per roll
- ▶ 30/CS



356018 Deep Woods Off

- ▶ Unscented
- ▶ Provides protection from biting insects
- ▶ Contains 25% DEET
- ▶ 9 oz. aerosol can



Safety Glasses

- ▶ Black frame
- ▶ High impact polycarbonate lenses
- ▶ Ribbed non slip nose cushion
- ▶ Adjustable temples to fit face
- ▶ Anti fog coating

421012 Clear Lens
411056 Gray Lens



Yellow Rainsuit

- ▶ Polyester lined
- ▶ Bib overalls & jacket with hood
- ▶ Snap closures, seams electronically sealed

421029 Medium (M)
421030 Large (L)
421031 Extra Large (XL)
421042 Extra Extra Large (XXL)



Contractor XC Work Glove

- ▶ XtraCoverage™ palm is reinforced for abrasion resistance & grip
- ▶ Padded fingers and knuckles
- ▶ Terry-wipe thumb
- ▶ Full neoprene cuff with medical grade hook and loop closure

421095 Large
421096 X-Large



PVC Knee Boot

- ▶ Cleated outsole
- ▶ Unlined
- ▶ Washable black PVC

415035 Size 9 **415030** Size 10
415031 Size 11 **415033** Size 12



Handled Mop

- ▶ Deck mop with handle
- ▶ White cotton fiber
- ▶ 5 Ply yarn

353045 #8 Size
353046 #24 Size
353047 #32 Size



353041 Mop Wringer w/Bucket

- ▶ 31 qt. bucket - one piece
- ▶ 3" Non-marking casters
- ▶ Side press

Don't Forget!
422010 Wet Floor Sign



353028 24" Push Broom

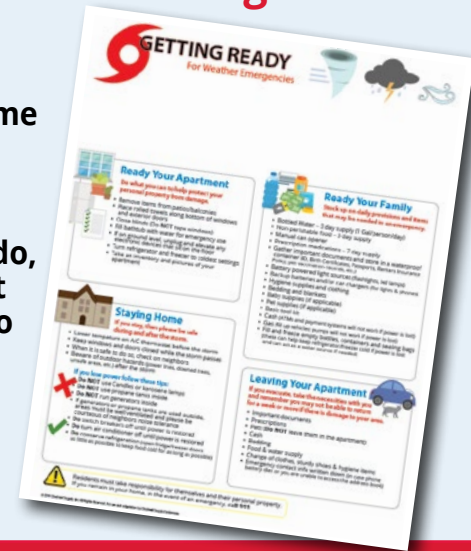
- ▶ Heavy duty plastic block
- ▶ 4" Palmyra bristles
- ▶ 24" Wide
- ▶ 60" metal handle

RESIDENT WEATHER READINESS

Instructions for Residents In Case of Weather Emergencies

As storm season approaches, the time to plan is now!

To help you inform residents what to do, we've created a list that you can edit to share information.



Print or Download From:

ChadwellSupply.com/storm



351041 3/4 HP Commercial Carpet Blower/Dryer

- ▶ 550 watt blower; 1530 CFM
- ▶ Handle & wheels increase portability
- ▶ ETL/CETL/CE and SAA safety certified
- ▶ 18"H X 17"W X 19"D
- ▶ 28 lbs.

New!
In Stock



422109 Quick Dam Grab & Go Flood Kit

- ▶ Water activated flood control
- ▶ Bucket includes:
 - (5) 5ft flood barriers / absorbs 4.25 gallons each
 - (10) 12"x24" flood bags / absorbs 4 gallons each
- ▶ No need for sand or labor, filling sandbags
- ▶ Protect against storm surges, water main breaks, overflowing or leaking appliances and equipment, broken sprinkler heads, A/C condensation overflow, and more



For updates, branch closings, and potential delivery delays when inclement weather approaches, please follow us @ChadwellSupply on Facebook.

Marksman



421066 Marksman Wet/Dry Vacuum 2.5 Professional Series

- ▶ 8A 120V 60Hz
- ▶ Approx. 2.5 gallon plastic canister
- ▶ 10' power cord
- ▶ Washable cloth filter
- ▶ Accessories: 5' hose assembly, 3pcs plastic tubes, Wet & dry floor brush, Crevice nozzle, Round brush
- ▶ Nozzle fits over any 3/4" A/C drain line



411085 Werner 5' Aluminum Step Ladder

- ▶ Load cap 250 lbs
- ▶ Slip resistant tread
- ▶ Lightweight
- ▶ Max reach 9'
- ▶ Spill proof shelf



456052 EZ Street Asphalt Repair

- ▶ Instantly ready for traffic
- ▶ Works in any temperature & in water
- ▶ Performance tested
- ▶ No mixing - Ready to use

Don't Forget!
415013 Square Shovel



Marksman



415019 Litter Pick-Up Tool Pro

- ▶ 36" Length
- ▶ Industrial aluminum shaft
- ▶ High impact plastic ergonomic handle
- ▶ Molded rubber grippers grab and hold better



60 Gallon Trash Bags

- ▶ High strength, low density repro resin
- ▶ 38" x 58"
- ▶ Black

- 353067 Heavy 1.4 mil - 100/BX
- 353062 Heavy 1.75 mil - 100/BX
- 353084 Extreme Heavy 6 mil - 25/Roll



353078 50 Gallon Roll Out Trash Container

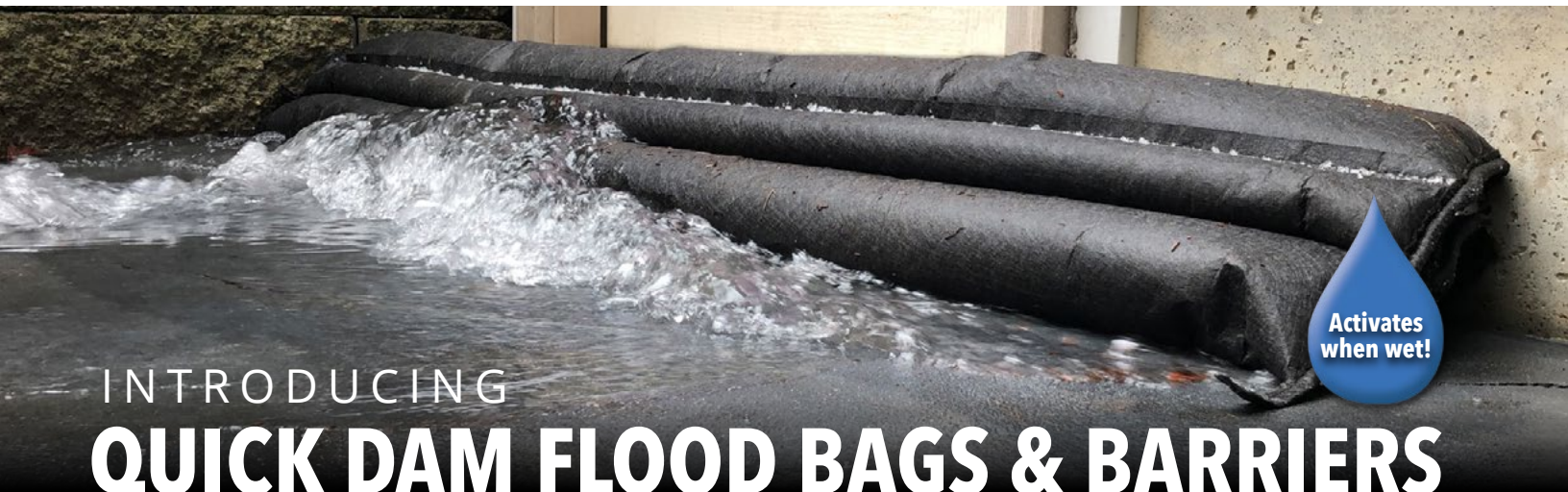
- ▶ Tilt-n-wheel
- ▶ 23" diameter x 41" tall
- ▶ 8" non-marking wheels
- ▶ Hinged, double walled lid
- ▶ Grey

353070 Huskee 32 Gallon Trash Can

- ▶ 22" Diameter x 27-3/8" tall
- ▶ Heavy duty
- ▶ Dark Grey

Don't Forget!
353071 Huskee Trash Can Lid





INTRODUCING
QUICK DAM FLOOD BAGS & BARRIERS



- Patented **Water Activated** Flood Bags & Barriers absorb, control & divert flood water
- Grows to full size of **3.5" high in 10 minutes**
- Leave in place for **ongoing protection** & use
- Safe, **non-hazardous**, non-toxic, environmentally friendly & decomposes over time
- Made in the **USA**



New!
In Stock

422109 Quick Dam
\$159.99 Grab & Go Flood Kit

- (5) 5ft Flood Barriers
- (10) 12"x24" Flood Bags

* Other sizes/lengths/quantities/styles are available through Chadwell Supply Special Orders specialorders@chadwellsupply.com

PREPARE NOW
FOR HURRICANE SEASON

■ Heavy Rain ■ Hurricane Season
■ Monsoon Season

PROTECT AGAINST:

Hurricanes Severe Storms Flash Floods



Flood Barriers*

- Grows to 3.5" high in 5ft, 10ft or 17ft lengths
- Absorbs 4 gallons, 8 gallons & 13.5 gallons of water (depending on length)
- Ideal for doorways, garage entrances & more
- Built in wedge helps prevent rolling
- Stack multiple barriers in pyramid formation to increase wall height



Flood Bags*

- Grows to 12" x 24" x 3.5" high
- No need for filling sandbags, sand or labor
- Ideal for larger areas prone to flooding or erosion
- Stack multiple bags in brick & pyramid formation to increase wall height