



HCX

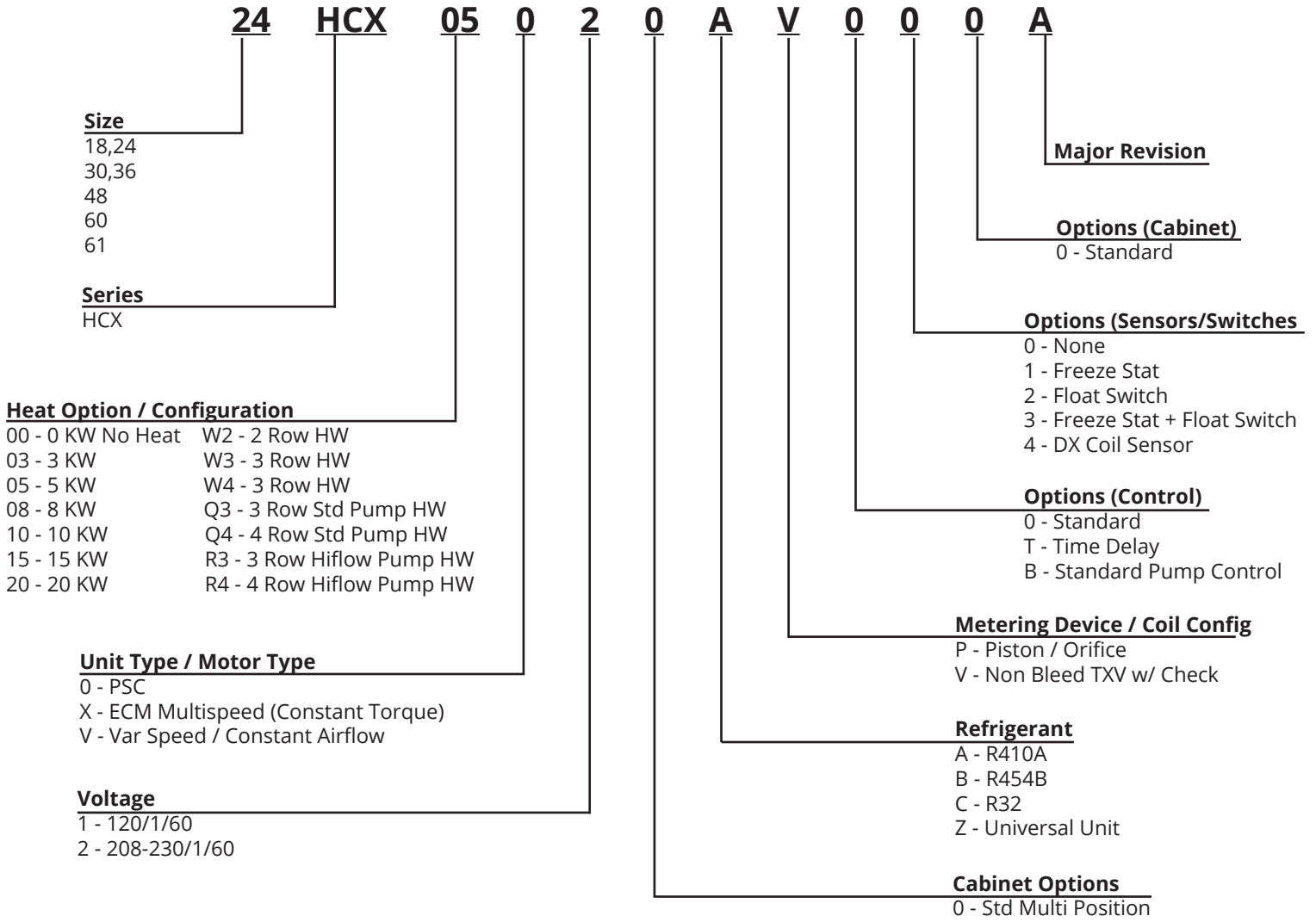
Air Handler

- Upflow / Horizontal
- Heat Pump or DX - With Electric Heat
- 1-1/2 - 5 Tons Cooling
- 0 - 25 kW Electric Heat



To order through Chadwell Supply, please contact your local sales representative.

Nomenclature



HCX Series

The **HCX** series air handler is designed to offer the industry an air handler that includes every available feature as well as up to **15 SEER2** when matched with today's higher efficiency condensing units and heat pumps.

The **HCX** is completely factory assembled with a cooling coil, electric heat (except 0kW models), 240V motor, 24V transformer, horizontal drain pan, and throw away filter.

All components are installed within a fully insulated, galvanized steel cabinet with an attractive powder coated finish with **2% or less leak loss**.

STANDARD FEATURES

- **3-way airflow** (except 60/61HCX)
- Factory installed horizontal drain pan
- Completely **prewired** with 0-25kW electric heat (except 0kW models)
- Compatible with major brands of **split condensing units** and **heat pumps** (Contact factory for correct match with outdoor unit)
- **Piston-type** metering device or factory or field installed R410A TXV (non-bleed type) on cooling coil
- Factory installed **filter**
- Attractive **baked on finish**
- **Copper tube** cooling coils
- Primary and secondary **drain connections** on cooling coil
- Fully **insulated and painted** galvanized steel cabinet
- Factory installed **disconnect switch** (over 10kW models)

Efficiency

The HCX series air handler is the latest state-of-the-art air handler for heat pump or straight cool (DX) operation. Depending on the condensing unit or heat pump used, cooling efficiency is up to 15 SEER2 depending on the outdoor unit. Cooling coils have factory installed R410A TXV's and are circuited for cooling or heat pump operation.

First Co's customer is ultimately responsible for confirming which fan coil models are compatible with selected outdoor units(s) and which expansion valves (if any) are required. To determine certified indoor/outdoor matches, go to: www.ahridirectory.org

Components

Each air handler includes a high efficiency cooling coil, pre-wired electric heat (except 0kW), service switch (over 10kW), 240V fan motor, 24V transformer, horizontal drain pan, and throw away filter.

Cabinets

Cabinets are fully insulated and painted with an attractive, baked-on powder coating (light gray).

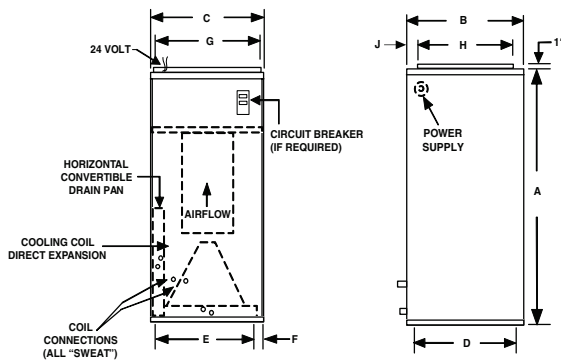
Cabinet air leakage is no more than 2% when tested in accordance with ASHRAE 193

Installation

No modification is required for vertical or horizontal (right-to-left) airflow. A horizontal drain pan is factory installed for right-to-left airflow and can be re-positioned within the cabinet to offer left-to-right airflow.

Accessories

Accessories include cooling / heat pump R22 field mounted TXV kits.



(See P. 5 for Model Numbers)

PHYSICAL DIMENSIONS												
UNIT MODEL	A	B	C	D	E	F	G	H	J	LIQ.	SUCT.	FILTER
18/24HCX**0	40	20	20	18-1/2	16	2	18	16	3	3/8	5/8	18 X 20 X 1
30/36HCX**0	42	23	20	21-1/2	16	2	18	17	5	3/8	3/4	20 X 22 X 1
48/60HCX**0	48	28	21-1/4	26-1/4	17	2	19-1/4	18-1/4	8-7/8	1/2	7/8	20 X 25 X 1
61HCX**0	54	28	21-1/4	26-1/4	17	2	19-1/4	18-1/4	8-7/8	1/2	7/8	20 X 25 X 1

ELECTRICAL DATA													
UNIT MODEL	NOM. CFM	(1) NOM. COOL BTUH	ELECTRIC HEAT CAPACITY				TOTAL AMPS		MIN. CIR. AMPACITY		MAX. FUSE OR HACR BREAKER		
			kW		BTUH		240V	208V	240V	208V	240V	208V	
			240V	208V	240V	208V							
18HCX**0 & 24HCX**0	-0	600	18,000	0	0	0	0	1.6	1.6	2	2	15	15
	-3			3	2.3	10,200	7,700	14	13	18	16	20	20
	-4			4	3	13,600	10,200	19	16	23	20	25	20
	800	-5	5	3.8	17,000	13,000	23	20	28	25	30	25	
		-6	6	4.5	20,500	15,400	27	24	36	29	40	30	
		-8	8	6	27,300	20,500	35	31	46	38	50	40	
-10	10	7.5	34,100	25,600	44	38	54	47	60	50			
30HCX**0 & 36HCX**0	-0	1,000	30,000	0	0	0	0	2.5	2.5	3	3	15	15
	-5			5	3.8	17,000	13,000	24	21	30	26	30	30
	-8			8	6	27,300	20,500	36	32	46	40	50	40
	1,200	-10	10	7.5	34,100	25,600	45	39	56	49	60	50	
		(2) -15	15	11.3	51,100	38,500	45	39	56	49	60	50	
			21	18	26	23	30	25					
48HCX**0	-0	1,600	48,000	0	0	0	0	3.5	3.5	5	5	15	15
	-5			5	3.8	17,000	13,000	25	22	30	27	30	30
	-8			8	6	27,300	20,500	37	33	47	40	50	40
	-10			10	7.5	34,100	25,600	46	40	57	50	60	50
	(2) -15			15	11.3	51,100	38,500	46	40	57	50	60	50
	(2) -20		21	18	27	23	30	25					
			46	40	57	50	60	50					
			42	36	53	46	60	50					
			46	40	57	50	60	50					
			42	36	53	46	60	50					
(2) -25	25	18.75	85,250	63,900	42	36	53	46	60	50			
					21	18	27	23	30	25			
60HCX**0 & 61HCX**0	-0	2,000	60,000	0	0	0	0	6.0	6.0	8	8	15	15
	-5			5	3.8	17,000	13,000	27	24	34	30	35	30
	-8			8	6	27,300	20,500	40	35	49	44	50	45
	-10			10	7.5	34,100	25,600	48	42	60	53	60	60
	(2) -15			15	11.3	51,100	38,500	48	42	60	53	60	60
	(2) -20		21	18	27	23	30	25					
			48	42	60	53	60	60					
			42	36	53	46	60	50					
			48	42	60	53	60	60					
			42	36	53	46	60	50					
(2) -25	25	18.75	85,200	63,900	42	36	53	46	60	50			
					21	18	27	23	30	25			



WARNING AVERTISSEMENT ADVERTENCIA
 Cancer and Reproductive Harm
 Cancer et Troubles de l'appareil reproducteur
 Cáncer y Daño Reproductivo
www.P65Warnings.ca.gov LBY0057

NOTES:

- Nom. cooling at 45°F suction temp. 80°F DB / 67°F WB air on.
- 15kW and 20kW models require 2 supply circuits. 25k models require 3 supply circuits.
- Units suitable for installation with 0" clearance to combustible material.

Data is subject to change. Please verify current information at www.firstco.com.

HCX

BLOWER DATA										
UNIT MODEL	FAN SPEED	DUTY	MOTOR HP (240V)	CFM vs. EXTERNAL STATIC PRESSURE						
				0.10	0.15	0.20	0.25	0.30	0.40	0.50
18HCX**0	LOW	COOL	1/6	780	750	720	700	660	600	510
				780	750	720	700	660	600	510
24HCX**0	HIGH	COOL	1/6	900	880	860	830	790	700	600
				740	710	690	660	630	570	490
30HCX**0	LOW	COOL	1/3	1210	1190	1160	1140	1110	1050	990
				1210	1190	1160	1140	1110	1050	990
36HCX**0	HIGH	COOL	1/3	1410	1380	1340	1310	1270	1190	1060
				1170	1150	1130	1100	1080	1030	970
48HCX**0	HIGH	COOL	1/2	1760	1730	1680	1640	1580	1480	1360
				1490	1460	1430	1400	1370	1300	1210
				1280	1260	1230	1210	1190	1130	1080
60HCX**0	HIGH	COOL	3/4	2130	2110	2090	2060	2025	1930	1820
				1690	1680	1660	1640	1620	1580	1540
61HCX**0	HIGH	COOL	3/4	2175	2150	2130	2100	2065	1970	1855
				1725	1715	1695	1675	1650	1610	1570

NOTE: Use 48HCX**0 for 3.5 ton applications and field convert to medium speed for cooling.

MODEL NUMBERS

MODEL SIZE (BTU)	MODEL (PISTON)	FACTORY INSTALLED TXV'S
		MODEL (R410A TXV)
18,000	18HCX**0	18HCX**0 R410A TXV
24,000	24HCX**0	24HCX**0 R410A TXV
30,000	30HCX**0	30HCX**0 R410A TXV
36,000	36HCX**0	36HCX**0 R410A TXV
42,000/48,000	48HCX**0	48HCX**0 R410A TXV
60,000	60/61HCX**0	60/61HCX**0 R410A TXV

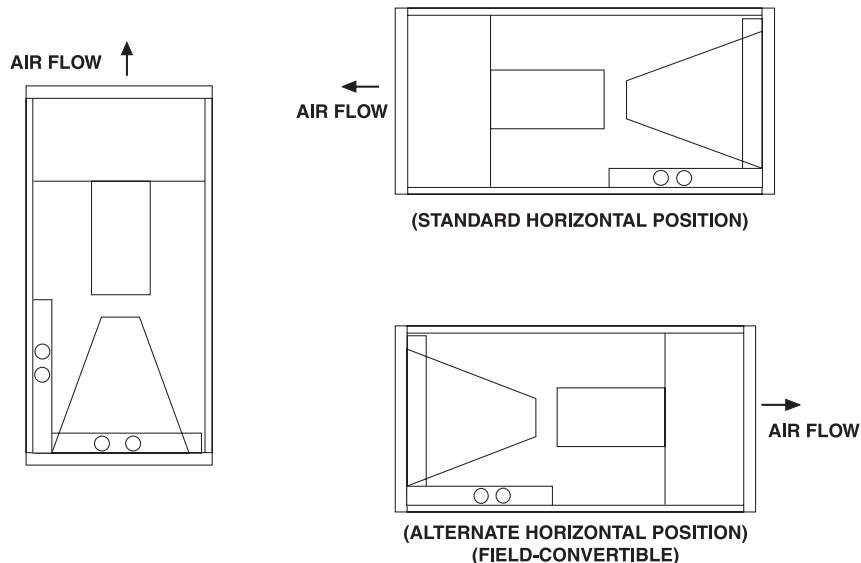
All TXV's are approved for cooling only or heat pump operation (non-bleed type).

(*) = kW HEAT

NOTE:

Expansion valve requirement depends on the selected outdoor unit. Go to: www.firstco.com or contact the factory for assistance.

3-WAY AIRFLOW



ACCESSORIES

All Field Installed

EXPANSION VALVE KITS (Field installed) (cooling only or heat pump)	
R410A	
9EVR410-3	18/24HCX**0
9EVR410-4	30/36HCX**0
9EVR410-5	48/60/61HCX**0

NOTES:

1. Above expansion valve kits are approved for both cooling only (non heat pump) and heat pump applications.
2. Valves are non-bleed type. Field added. Hard start kit may be required.
3. Valves have screw-on connections.

In keeping with its policy of continuous progress and product improvement, First Co. reserves the right to make changes without notice.

Catalog HBX718 (Replaces HBX217)



FIRST CO.
P.O. BOX 270969 - DALLAS, TEXAS 75227
PH. (214) 388-5751 | FAX (214) 388-2255
WWW.FIRSTCO.COM

JULY 2024